

CASE STUDY

# EXPLORE, RICHMOND, LONDON



# KAWNEER HELPS TO ELEVATE THE OFFICE EXPERIENCE IN GREATER LONDON

## VISION

Explore, formerly known as Eton House, in Richmond, London is a completely reimagined CAT A refurbishment project for Barwood Capital with an additional fourth floor rooftop extension, creating a totally transformed building offering 45,000 sq ft of destination office space.

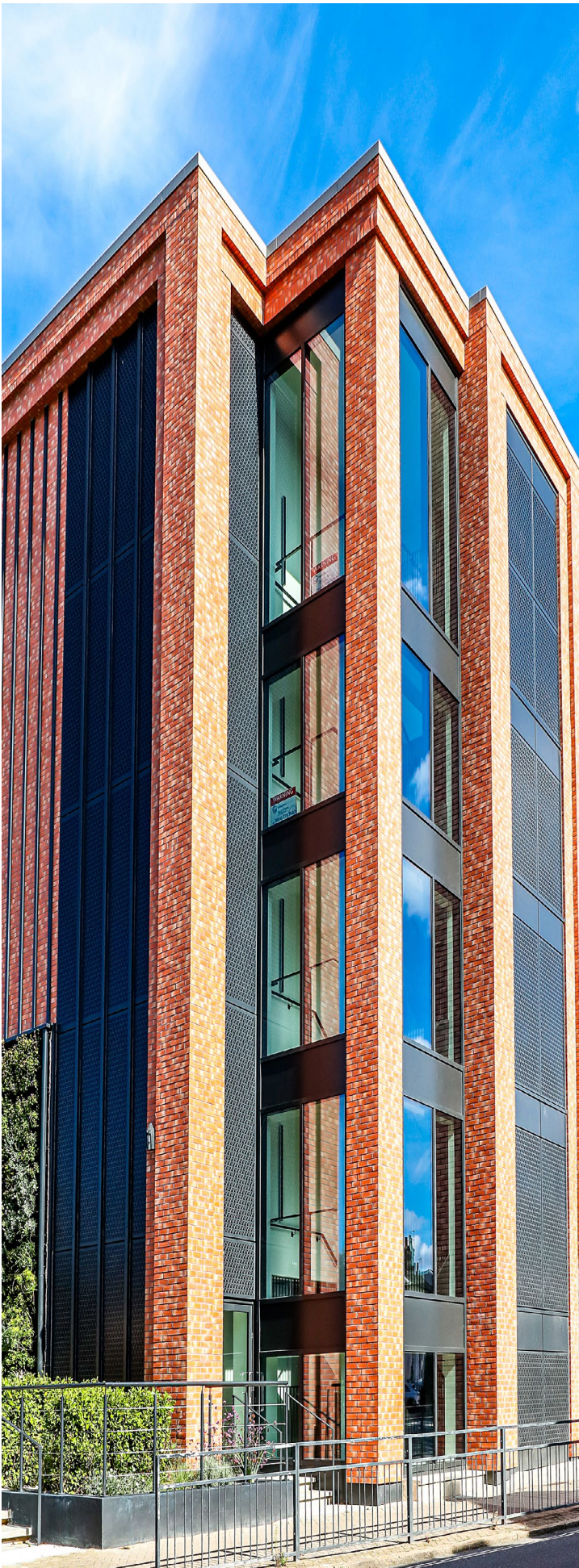
Located within Richmond's green and spacious conservation area, the project delivers exceptional amenities and a sustainable, energy efficient workplace environment, featuring embedded passive design principles. It is rated BREEAM Outstanding and EPC Rating A.

Explore has been totally reconfigured to appeal to businesses looking to make an impression in a light, airy and free flowing facility.

Project architects were Darlings Associates and main contractor was RED Construction Group Ltd

© 2024 Kawneer





## TRANSFORMATION

Approved specialist subcontractor JPJ Installations Ltd provided a high-performance, energy-efficient curtain wall, using Kawneer's AA®110 Curtain Wall System for a range of screens spanning from ground floor to Level 3 and for the panoramic Level 4 full-height curtain wall with bespoke ceramic infill panels at columns, accommodating building movement/tolerance.

They also fitted Kawneer's AA®720 Series Doors in a double door configuration for Level 4 terrace doors and Level 3 inset balcony doors, offering excellent thermal and weather performance.

AA®190 TB Heavy-Duty Entrance Doors were selected for the high traffic main entrance, stair cores and fire escape areas, due to their robust nature and sleek design.

JPJ also installed solar control glass for energy efficiency and acoustic performance and a neutral appearance.



Issue Number: 171

## REALISATION

Opened in the late summer of 2024, Explore is now offering a best-in-class occupational experience with new facilities that include 4200 sq ft of private landscaped ground floor gardens, a top floor terrace, a business lounge, gym, cycle store and ten electric car charging points, with digital connectivity attaining the WiredScore Gold certification.

Offering a net gain in biodiversity and urban greening, the building's water consumption strategy reduces potable water demand and attenuates storm water run-off.

All electric heating and cooling HVAC is achieved with no fossil fuels on site.



Please contact our Architectural Services Team if you have a project you would like to discuss:  
Tel: 01928 502604 / Email: [kawneerAST@arconic.com](mailto:kawneerAST@arconic.com)

© 2024 Kawneer  
Photos: Gary Britton Photography

**KAWNEER**

Kawneer UK Ltd  
Astmoor Road  
Astmoor Industrial Estate  
Runcorn, Cheshire  
WA7 1QQ

Tel: +44 (0) 1928 502604  
E-mail: [kawneerAST@arconic.com](mailto:kawneerAST@arconic.com)

[www.kawneer.co.uk](http://www.kawneer.co.uk)